



Ventilation Gland

Cable glands with integrated ventilation

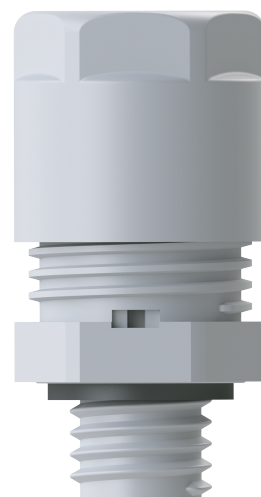
- Combines cable gland functionality with ventilation, providing secure cable retention and pressure equalization within enclosures.
- Offers the advantage of using a single enclosure entry hole for both cable connection and ventilation, saving space and simplifying design.
- Prevents the formation of water condensation in tightly-sealed standard housings and protects against damage caused by pressure differences.
- Provides effective sealing to block ingress of water, dust and contaminants.
- Extends the service life of equipment by relieving pressure that would otherwise degrade enclosure gaskets over time.
- Manufactured from high-quality, durable materials for long service life.
- Suitable for both indoor and outdoor use in industrial environments

Technical Details

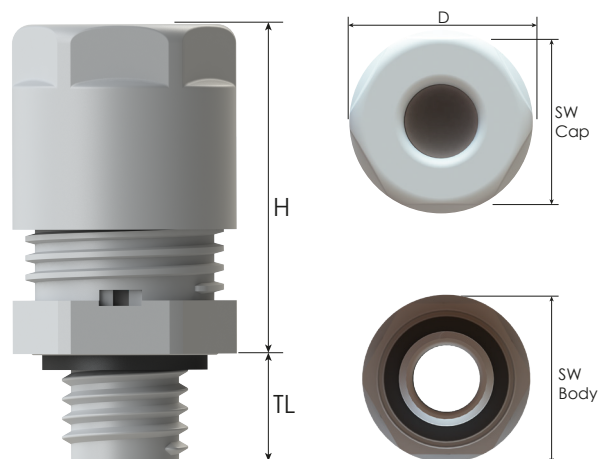
Material	Body, Cap	PA 6 (Polyamide 6)	
	Seal	CR (Chloroprene)	
	Vent. Membran	PTFE / Acrylic Co-Polymer	
	Gasket	CR	
Ingress Protection Rating		IP66 - IP68 - IP69	
Flammability		V2 according to UL94	
Operating Temperature		Permanent	Intermittent
		-40 °C to +100 °C	-40 °C to +150 °C
Cable Type		Non armoured	
Thread Type		• Metric EN 60423	
		• PG DIN 40430	
		• NPT ANSI B1.20.1	
		• Locknut	
Accessories		• Dome plug	
Remarks		• Accessories must be ordered separately.	

Approvals	Certificate Number	Standards
	40040032	DIN EN 62444
	E199260	UL 514B
TYPE 4X	E199260	UL 50E

For more approvals : see our webpage



Ventilation Gland



Thread Type METRIC acc. to EN 60423

Outer Thread Size (Male)	Clamping Range Ø min-max mm	Average Air Flow for $\Delta P = 70 \text{ mbar/1 psi}$ l/h	Water Intrusion bar	Outer Thread Length TL mm	Spanner Width		Outer Ø D mm	max. Height H mm	Part Number		
					SWCap mm	SWBody mm			RAL 7035 light grey	RAL 7001 grey	RAL 9005 black
M12x1.5	4,0 - 8,0	70	0,2	8,0	19	19	21,5	31	HBMVG-1S	HBMVG-0S	HBMVG-2S
M16x1.5	4,0 - 8,0	70	0,2	10,0	19	19	21,5	31	HBMVG-11	HBMVG-01	HBMVG-21
M20x1.5	6,0 - 12,0	120	0,2	10,0	24	24	27	37,5	HBMVG-12	HBMVG-02	HBMVG-22
M25x1.5	11,0 - 17,0	120	0,2	10,0	29	29	32,5	43,5	HBMVG-13	HBMVG-03	HBMVG-23

Thread Type PG acc. to DIN40430

Outer Thread Size (Male)	Clamping Range Ø min-max mm	Average Air Flow for $\Delta P = 70 \text{ mbar/1 psi}$ l/h	Water Intrusion bar	Outer Thread Length TL mm	Spanner Width		Outer Ø D mm	max. Height H mm	Part Number		
					SWCap mm	SWBody mm			RAL 7035 light grey	RAL 7001 grey	RAL 9005 black
PG9	4,0 - 8,0	70	0,2	8,0	19	19	21,5	31	HBSVG-12	HBSVG-02	HBSVG-22
PG11	4,0 - 8,0	70	0,2	8,0	19	22	24	31	HBSVG-13	HBSVG-03	HBSVG-23
PG13,5	6,0 - 12,0	120	0,2	9,0	24	24	27	37,5	HBSVG-14	HBSVG-04	HBSVG-24

Thread Type NPT acc. to ANSI B1.20.1

Outer Thread Size (Male)	Clamping Range Ø min-max mm	Average Air Flow for $\Delta P = 70 \text{ mbar/1 psi}$ l/h	Water Intrusion bar	Outer Thread Length TL mm	Spanner Width		Outer Ø D mm	max. Height H mm	Part Number		
					SWCap mm	SWBody mm			RAL 7035 light grey	RAL 7001 grey	RAL 9005 black
NPT 3/8"	4,0 - 8,0	70	0,2	15	19	22	24	31	HBNVG-11	HBNVG-01	HBNVG-21
NPT 1/2"	6,0 - 12,0	120	0,2	15	24	24	27	37,5	HBNVG-12	HBNVG-02	HBNVG-22